


This VR2W Quick Guide provides information on key VR2W procedures. Full details for **all** VR2W procedures are found in the VR2W User manual and at www.vemco.com. We strongly recommend you study the full user manual before using this quick guide.



Do not bump the VR2W hydrophone or expose it to extreme temperature variations.
Doing so may damage the receiver and render it unable to detect transmitters.

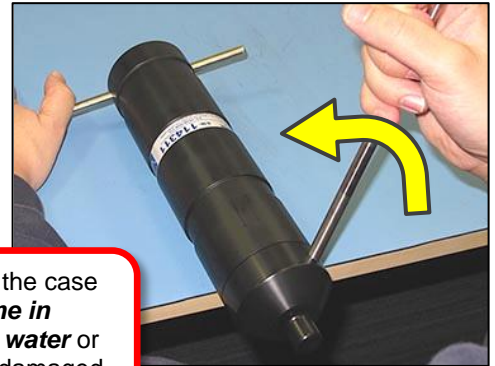

Open Case

Place VR2W on clean, stable surface so hydrophone hangs off edge. We recommend working in a controlled environment.

Insert one steel rod into the Attachment hole and other one in the Comm Key Hole on the end-cap and hold on to the rods.

Apply pressure to the rod in the COMM Key hole to turn end-cap counter-clockwise when you are facing the hydrophone. Remove rod when end-cap turns easily and continue turning by hand.

Slide end-cap and cylinder apart until the battery compartment has cleared the cylinder. Be very careful not to damage the threads on the end-cap or the VR2W won't close and seal properly.

Electronics inside the case must **NEVER** come in **contact with any water** or the VR2W will be damaged.

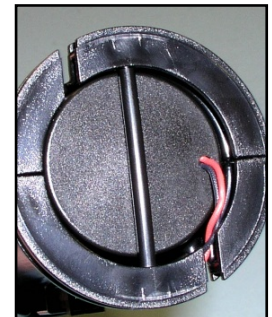
Battery

The battery is held in the battery compartment by a plastic pin spanning the opening. Remove the thin O-ring before removing the pin (O-ring holds pin in place). Downward force on battery may be needed to allow pin to move.



The battery is connected to VR2W on the side of the case. When installing the battery, listen for a "click" and watch that light flashes four times and then twice quickly every 5 seconds. When disconnecting battery, press the release tab on the battery connector and then pull connector halves apart.

TIP: Write the date on the battery.



O-rings

Make sure the two O-rings in the end-cap, and the corresponding O-ring surface inside the Outer Cylinder, are clean and debris-free. If the VR2W has previously been deployed, replace the O-rings.



Close Case

Close the VR2W case by doing the reverse of opening it, but first **put a new desiccant pack in the bottom of the tube**. Slide the battery end into the Outer Cylinder. Rotate the end-cap clockwise, using the steel bars when needed.

Stop turning when the gap between the two halves is closed. Over tightening could damage the case.



A desiccant pack helps reduce the occurrence of condensation in the VR2W

Activate

Slide the smaller end of the Comm Key in the Comm Key Hole on the VR2W, near the hydrophone.

Wait until the VR2W's LED begins flashing a bright, long, steady flash once a second. The wait time is less than five seconds.

Remove the Comm key.



One bright flash every second

Communicate

Open VUE and wait while software scans for the activated VR2W. If it doesn't scan, then click the "Device Scan" button.

After VR2W is located, double-click on the receiver icon with the correct serial number to open communication and display receiver information.

VR2W Status Light is continuously on during communication.

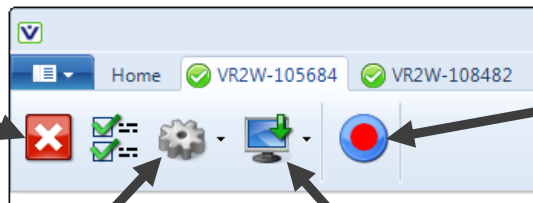


Having trouble? Try a new battery.

VUE Actions

Actions such as starting a study, offloading data, and ending communication are performed from the Receiver Tab and are started by selecting the correct icon in the tab's ribbon. Details are found in the VR2W user manual.

Close View – ends communication with VR2W and closes receiver tab. Receiver resumes recording (does not initialize).



Start Recording – setup and begin a study; also erases VR2W memory

Update firmware – only when instructed by VEMCO.

Offload data – choose to offload all data or just new data.

Attachment

The common method used to attach a VR2W receiver to a mooring line is to use five cable ties (zip tie or tie-wrap) with the following characteristics:

- 388 mm (15.25") long
- 7.5 mm (0.3") wide
- UV protected
- 120 lb tensile strength



Open the "wrap in the rope" to pass the cable tie through the rope.

Avoid shadowing or blocking the receiver with your mooring equipment. Line of sight is a must!

Suggested minimum: 3/8" diameter nylon rope



Through Rope

Around Rope

Around Rope

Through Rope

Status Light

Flash Meanings:

- No flashes = no power
- 2 quick flashes every 5 sec = in Recording Mode
- 2 quick flashes every 10 sec = memory is full
- 1 quick flash = acoustic ping received
- 1 bright, long flash = detection written to memory
- 1 long flash per sec = ready for *Bluetooth* communication
- On (solid) = communicating with VUE

Operating temperature: -5 °C to 40 °C; Water in which the VR2W is deployed *must not freeze*.

Static depth rating: 500 meters (730 psi)

vemco

www.vemco.com

+1-902-450-1700